

H&L Package \$808,000



Lot 8016 Steeple Chase, Shaw

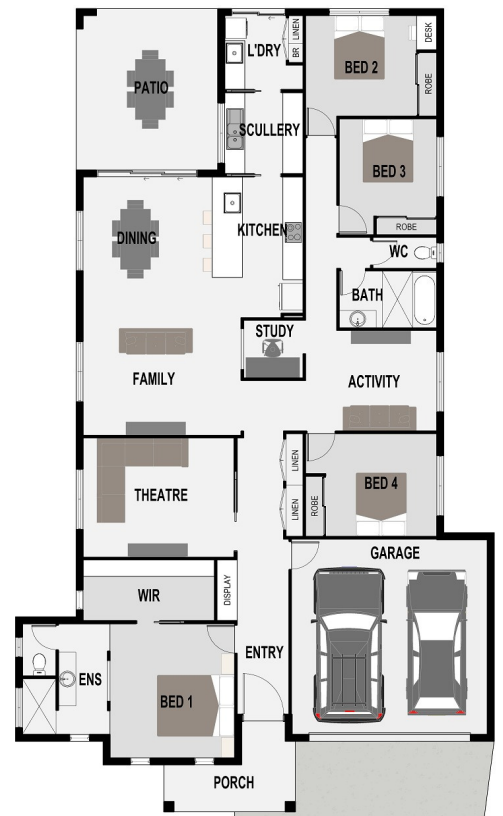
4  2  2 

KEIR PALMS 263 FEATURES

- Full turn key
- Fully fenced including front fence
- Professional colour consultation
- Theatre Room + Study Nook + Kids Activity Room
- Scullery
- 2.7m ceilings

LOT 8016 FEATURES

- Huge 801m<sup>2</sup>
- Overlooking future Sports Field + Adventure Park
- Live large in the heart of Townsville
- Walking path network on your doorstep



Ph Shane 4774 6767  
[landsales@parkside.biz](mailto:landsales@parkside.biz)

\*The property shown in this advertisement is a house and land package and not currently constructed. Images and photographs on this website may depict fixtures, finishes and features either not supplied the builder or not included in any price stated. Package price is correct at time of advertisement. Prices subject to change.